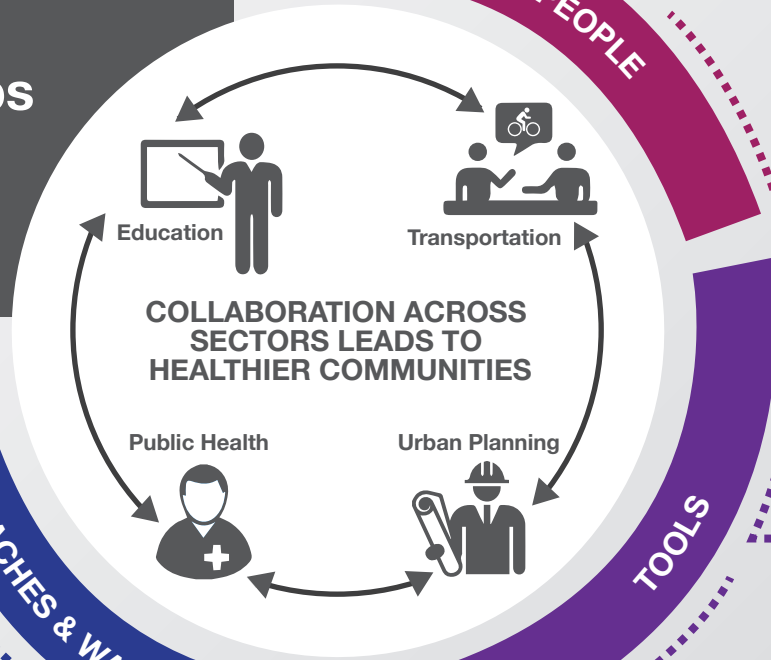


# Pathways to Policy: Eight Ways To Build Successful Partnerships And Create A Path To Policy Change



**Relationships:**  
Develop strong personal and organizational relationships



**Staffing:**  
Create cross-sectoral positions and placements



**Expertise and Technical Assistance:**  
Learn from experts outside your field



**Tools and Resources:**  
Bridge knowledge gaps across sectors



**Evidence and Data:**  
Share the right evidence for the right decision-maker



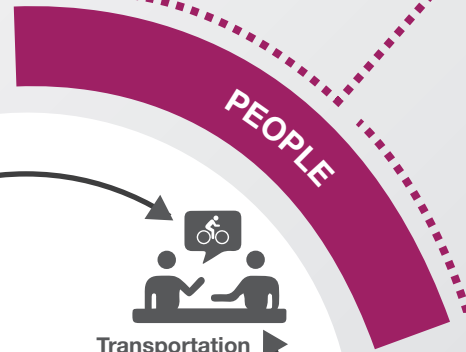
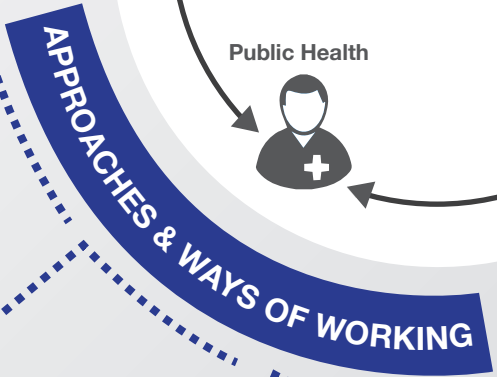
**Positive, Open Engagement Strategies:**  
Learn what your partners bring to the table and what they need from you



**Issue Framing:**  
Know the decision-makers and position policy issues



**Collaborative Approaches:**  
Find common ground and shared objectives



## How can you find out more?

The Pathways to Policy can help you build effective and successful multi-sectoral partnerships in your jurisdiction to support policy change.

To find out more about the Pathways to Policy - the lessons learned from collaborative projects addressing physical activity and built environment policy - please visit: [www.cancerview.ca/pathways-built-environment](http://www.cancerview.ca/pathways-built-environment)